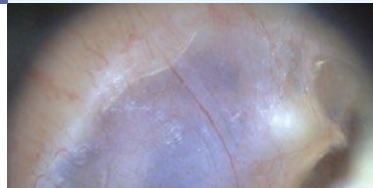




## Dino-Lite EarScope



The Dino-Lite EarScope is a digital Otoloscope that is easy to use and will be very helpful in general practice, in Audiology and for ear, nose and throat specialists. With the EarScope you can easily inspect and photograph the ear canal, the ear drum and the outer ear.

Ear problems such as inflammation, clogging by accumulated ear wax or the presence of fluid behind the ear drum can be recognized quickly. The practitioner is always assured of a bright and clear image thanks to the built-in LED lights and adjustable magnification between 55 and 90 x (Pro models).

All Dino-Lite EarScopes have a USB connection and function independent of batteries. Therefore the EarScope is always ready for use. The image can be viewed on a computer screen to simplify diagnosis simplifies and also allows the patient to watch the images as well. The images – either still photo or video - can be stored digitally and easily added to a patient file or forwarded to a colleague. All EarScopes are compatible with Windows and MacOS.

The EarScope Basic MEDL3E has a VGA resolution and is particularly suitable for home use. The speculum is removable and can be cleaned for proper hygienic.

The MEDL4E EarScope Pro is intended for professional use, has a 1.3 mega pixel resolution and comes with replaceable specula of 3, 4 and 5 mm. Ten pieces of each size are included and re-ordering of the specula is possible. All of the benefits mentioned earlier are obviously also applicable to this model.

The top model with a 1.3 megapixel resolution is the EarScope Pneumatic MEDL4EP. With this model, the physician has the additional function of blowing a puff of air into the ear canal which allows him to assess the mobility of the eardrum that can point to a glue ear. Just like the EarScope Pro this model has replaceable specula, in this case 2.5 and 4 mm.



## In use

A general practitioner in Baarn, The Netherlands is using several Dino-Lite models: "My Dino-Lite EarScope provides beautiful images of the inside of the ear, I use it to inspect my patient's tympanic membranes. I can even inspect my own eardrum by means of the EarScope.

Because the Dino-Lite microscopes are directly connected to the USB port of my PC, the pictures can immediately be checked on a large screen and shared with my patients, batteries are never dead, the light is always good. As the Dino-Lite microscopes are connected to my PC, I can store and share images easily and quickly.

Pictures made with Dino-Lite can be stored in the Electronic Patient File simply by means of 3 mouse clicks. I can easily add pictures to my 'library' of skin affections. A picture says more than many words; the emergency of a patient's case can be judged very quickly. I am very fond of visualization."

## EarScope Pro

The EarScope Pro (MEDL4E) is a compact and safe solution for watching the eardrum and the external ear. The MEDL4E is the Pro model with 1,3 Megapixel resolution and a magnification of 55 ~ 90x. This model is delivered with disposable specula of 3, 4 and 5 mm (10 each).



## EarScope Pneumatic

The EarScope Pneumatic (MEDL4EP) is a compact and safe solution for watching the eardrum and the external ear. The MEDL4EP has a 1,3 Megapixel resolution and a magnification of 55 ~ 90x. It comes with a rubber bulb that is squeezed to give a puff of air into the ear canal, which allows the doctor to see how the eardrum moves. This model is delivered with disposable specula of 2,5 and 4 mm (10 each).



USB 2.0



MEASUREMENT  
FUNCTIONALITY



ADJUSTABLE  
~55-90x



MAGNIFICATION  
LOCK



1.3 MEGAPIXEL  
1280 x 1024



8 WHITE LEDs  
SWITCHABLE



MEASUREMENT  
FUNCTIONALITY



USB 2.0



ADJUSTABLE  
~55-90x



MAGNIFICATION  
LOCK



1.3 MEGAPIXEL  
1280 x 1024



8 WHITE LEDs  
SWITCHABLE

## EarScope Basic

The EarScope Basic (MEDL3E) is a compact and safe solution to look at the ear. The cap is detachable for hygienical reasons. The MEDL3E has a 640x480 resolution and magnification of 20 ~ 30x. This model is delivered with disposable specula of 3, 4 and 5 mm (10 each).



## EarScope handle

The Dino-Lite Earscope handle (HDE-01) is a lightweight aluminum handle which provides a more ergonomic and natural grip when using the Dino-Lite EarScope.



USB 2.0



ADJUSTABLE  
~20 - 30x



VGA RESOLUTION  
640 x 480



4 WHITE LEDs  
NON SWITCHABLE



BRICAM MEDICAL

Avda del Conocimiento, 37

PTS Granada. Edificio BioRegión. Of. 2

18016.- Granada

+34 958 199 198

info@bricamedical.com

Dino-Lite medical products are  
Medical Device Class 1 devices  
According to Directive 93/42/EEC  
modified 2007/47/EC

2016Q1 Copyright © 2016 IDCP BV

# Dino-Lite

Digital Microscope **Medical**

[www.dino-lite.eu/medical](http://www.dino-lite.eu/medical)

[www.dino-lite.eu](http://www.dino-lite.eu)